



## CommandCenter Secure Gateway

Centralized access and control  
of global IT equipment

# Command and Control of Your IT Enterprise

## Simplified, Secure, Centralized IT Infrastructure Management

Managing an IT infrastructure is complex, time consuming, expensive and critical to a company's success. Not only must IT managers be more responsive to changing needs while reducing downtime and increasing security; all this must be accomplished while reducing costs.

At Raritan, we've engineered the CommandCenter family of service management solutions to meet this challenge by simplifying IT operations. The first two family members, CommandCenter Secure Gateway and CommandCenter NOC, do this by uniquely combining the power of systems, network, application and proactive security management with secure, remote in-band and out-of-band server and network device access. CommandCenter Secure Gateway provides centralized access and control of all IT devices. CommandCenter NOC is a comprehensive solution that provides robust infrastructure and security management capabilities. Together, they help your IT staff quickly identify problems before they impact service levels and fix them without leaving their chairs.

CommandCenter Secure Gateway consolidates the management of Raritan's Dominion® Series, Paragon® and IP-Reach® appliances, and all of the servers and other IT devices connected to Raritan equipment, as well as HP servers with iLO/RILOE devices. With CommandCenter Secure Gateway, a single sign-on to a single interface gives IT administrators a consolidated view, click-and-control access and BIOS-level control, whether they're at the rack, at their desks, in the network operations center or anywhere in the world.

Ideal for any business with medium to large data centers or a number of remote offices, CommandCenter Secure Gateway features include:

- ▶ Simple and intuitive dashboard views, a single unified GUI with user-defined physical and logical views of all IT assets
- ▶ The ability to monitor, diagnose and resolve infrastructure problems using a browser, from anywhere at anytime
- ▶ Centralized, role-based policy management
- ▶ Comprehensive reporting to create customized reports on device and user data
- ▶ Secure, centralized management of multiple data centers, branch offices and remote locations via one, secure management software platform

The powerful combination of these features gives you the ability to dramatically:

- ▶ Reduce complexity through simple, aggregated access and user-defined logical views
- ▶ Reduce mean time to repair (MTTR) and downtime through reduced complexity combined with remote, BIOS-level access
- ▶ Reduce Total Cost of Ownership (TCO) by streamlining overall operations, administration and maintenance (OA&M)

# A New Dimension in IT Management

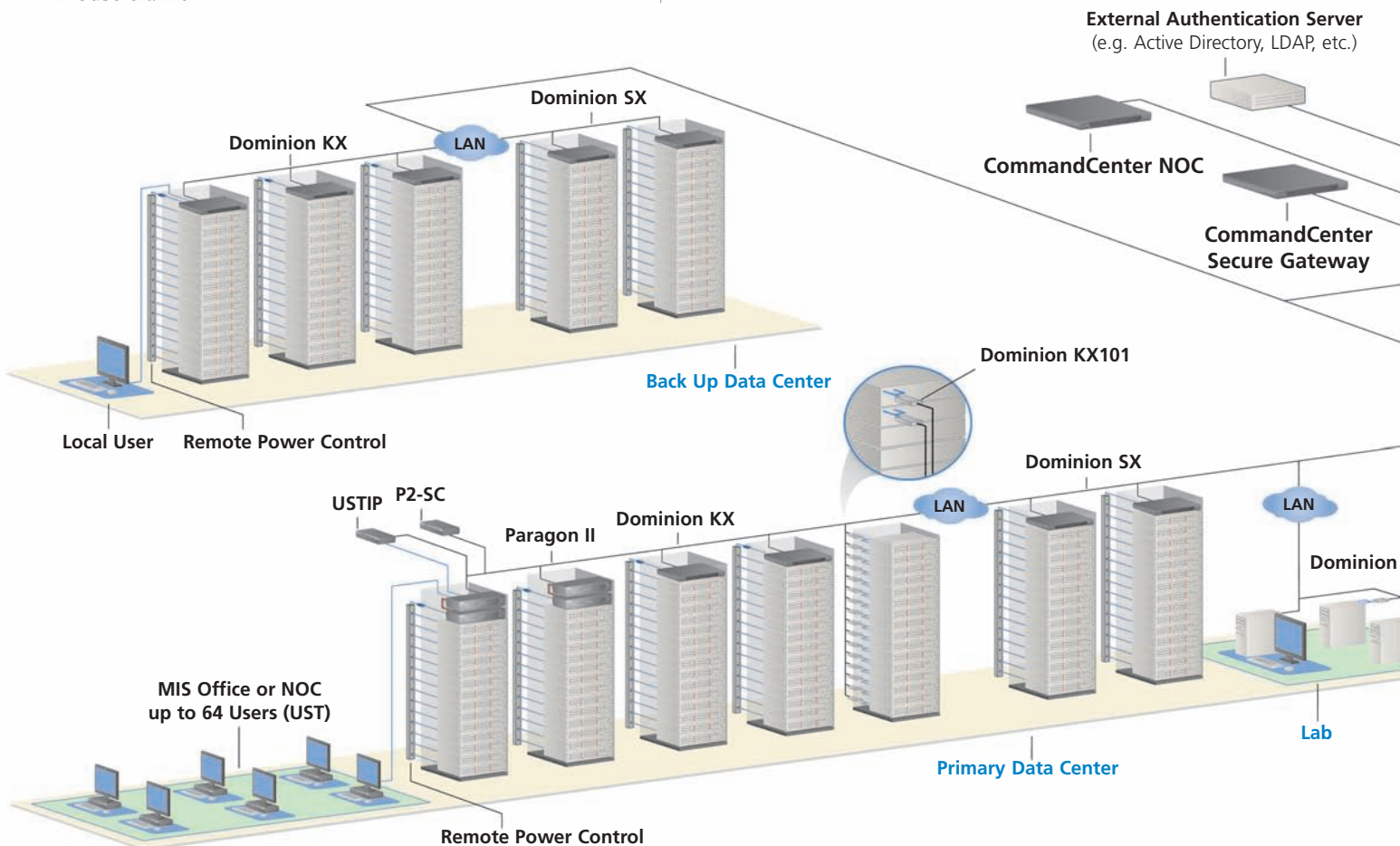
## Centralized IT management for the enterprise

- Secure, single point of access for managing multiple Raritan Dominion KX/SX/KSX, Paragon II, IP-Reach and Remote Power Control devices
- Single sign-on to HP Integrated Lights-Out/Remote Insight Lights-Out Edition (iLO/RILOE) devices
- Integrated access to CommandCenter NOC for seamless network monitoring, alerting, and remediation

## Robust security

- Powerful policy management tool allows access and control based on a broad range of user customizable criteria, including time of day, location, application, operating system, department and function
- 128-bit SSL encryption for all keyboard, video and mouse traffic

- Support for a broad range of authentication protocols, including LDAP, Active Directory®, RADIUS and TACACS+
- IP-based Access Control Lists (ACL), which grant or restrict user access by IP address
- Ability to import user groups from Active Directory servers
- Proxy mode for secure access to devices through firewalls/VPNs
- "Strong" user name and password authentication
- Security hardened to protect your system from vulnerabilities and root-level access
- Supports SAS 70 compliance - after a configurable amount of failed login attempts, the user ID will be locked out until the admin unlocks



# Secure Centralized Command

## High availability

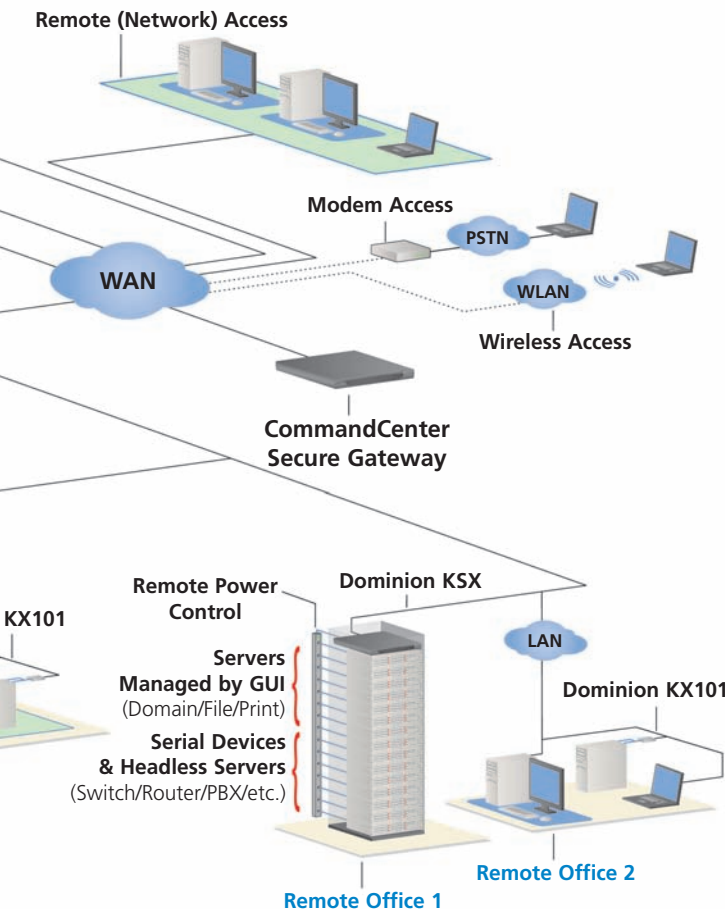
- ▶ Primary and secondary modes for automatic failover
- ▶ Geographic redundancy through primary and secondary CommandCenter Secure Gateway deployment on different subnets and/or locations
- ▶ Multiple redundancies and failover mechanisms, including hot-swap power supplies, dual Ethernet connections, ECC memory and dual hard drives
- ▶ Emergency dial-up access via built-in modem (CC-SG G1)
- ▶ Support for multiple Authentication, Authorization and Accounting (AAA) servers for failover
- ▶ Appliance architecture running on embedded Linux

## Ease of management

- ▶ Simple, intuitive Graphical User Interface (GUI) providing user-defined physical and logical views of ports, users, and devices
- ▶ Customizable device views that can be defined by target, OS, appliance type, site, group, user-defined fields or any combination of categories
- ▶ Configuration wizard for simplified security policy creation during deployment
- ▶ Raritan appliance discovery with device availability status, health updates and alarms for Dominion Series, Paragon, and IP-Reach
- ▶ Comprehensive reporting to create canned and customized reports on device and user data
- ▶ Back up and restore configurations of Raritan appliances
- ▶ SNMP traps/event support to forward critical alerts to SNMP Manager (e.g. HP OpenView)
- ▶ Syslog integration
- ▶ Built-in compatibility checker validates supported firmware versions of Raritan appliances
- ▶ Central storage of firmware for Raritan appliances for easy upgrade
- ▶ Task Manager and Notification Manager to schedule tasks and review status and results
- ▶ Maintenance Mode to perform maintenance functions on the system without user interruptions

## Scalable and flexible access

- ▶ Remote power control to IPMI-enabled servers
- ▶ Multi-Platform Client provides access via multiple browsers (Internet Explorer, Mozilla™, Firefox, Netscape®) running on Windows® and Linux®
- ▶ Supports third-party HP iLO/RILOE devices
- ▶ Supports thousands of Dominion KX101 and Dominion KX/SX/KSX units across numerous sites for consolidated access and control
- ▶ Supports consolidated in-band access methods like RDP, VNC, and SSH
- ▶ SSH Support for CLI access to devices connected to Dominion SX

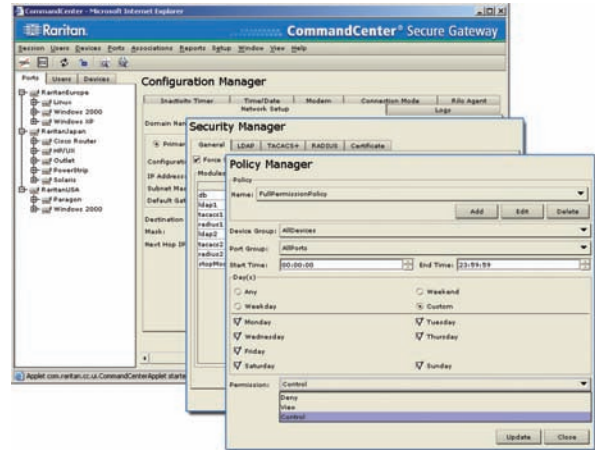


# Specifications



CommandCenter Secure Gateway	CC-SG G1	CC-SG V1
Form Factor	1U	1U
Dimensions (DxWxH)	22.1" x 17.32" x 1.75"; 563 x 440 x 44mm	24.21" x 19.09" x 1.75"; 615 x 485 x 44mm
Weight	24.07lbs; 10.92kg	23.80lb; 10.80kg
Power	Redundant, hot-swappable power supplies auto sensing 110/220 V - 2.0 A	Single Supply (1 x 300 watt)
Operating Temperature	0 - 30 C; 32 - 104 F	10 - 35 C; 50 - 95 F
Mean Time Between Failure (MTBF)	38,269 hours	36,354 hours
KVM Admin Port	(DB15 + PS2 Keyboard/Mouse)	(DB15 + PS2 or USB Keyboard/Mouse)
Serial Admin Port	DB9	DB9
Console Port	N/A	2x USB 2.0 Ports
<b>Hardware</b>		
Processor	Intel® Pentium® III 1 GHz	AMD Opteron 146
Memory	512 MB	2 GB
Network Interfaces	(2) 10/100 Eth. (RJ45)	(2) 10/100/1000 Eth. (RJ45)
Hard Disk & Controller	(2) 40-GB IDE @7200 rpm, RAID 1	(2) 80-GB SATA @7200 rpm, RAID 1
CD-ROM drive	CD-ROM 40x Read Only	DVD-ROM
<b>Remote Connection</b>		
Modem	V.92 (56Kbps); RJ-11 connector	N/A
Protocols	TCP/IP, UDP, RADIUS, LDAP, TACACS+, SNMP, SNTP, HTTP, HTTPS	TCP/IP, UDP, RADIUS, LDAP, TACACS+, SNMP, SNTP, HTTP, HTTPS
Warranty	Two years with Advanced Replacement* Guardian Extended Warranty Also Available	

## One View of the Entire Enterprise



## Access and control at anytime from anywhere

- ▶ Simple, intuitive Graphical User Interface (GUI) providing user-defined physical and logical views of ports, users, and devices
- ▶ SecureChat for secure, multi-user collaboration per port
- ▶ Comprehensive solution with integration of Raritan's Dominion Series, Paragon and IP-Reach appliances, plus integration with CommandCenter NOC for seamless network monitoring, alerting, and remediation
- ▶ Array of flexible logging and reporting options with audit trails for diagnostics and troubleshooting
- ▶ Real-time view and management of active user sessions and active ports

**When you're ready to take control, do it with CommandCenter Secure Gateway.**

Call 1.800.724.8090 or visit [Raritan.com/cc](http://Raritan.com/cc)

©2006 Raritan, Inc. All rights reserved. Raritan, CommandCenter, Dominion, Paragon and Paragon Manager are registered trademarks of Raritan, Inc. All other marks are trademarks or registered trademarks of their respective manufacturers.

\*To qualify for advanced replacement under the standard warranty, you must register the product at [http://www.raritan.com/standard\\_warranty](http://www.raritan.com/standard_warranty).

Raritan is a leading supplier of solutions for managing IT infrastructure equipment and the mission-critical applications and services that run on it. Raritan was founded in 1985, and since then has been making products that are used to manage IT infrastructures at more than 50,000 network data centers, computer test labs and multi-workstation environments around the world. From the small business to the enterprise, Raritan's complete line of compatible and scalable IT management solutions offers IT professionals the most reliable, flexible and secure in-band and out-of-band solutions to simplify the management of data center equipment, applications and services, while improving operational productivity. More information on the company is available at [Raritan.com](http://Raritan.com).